



DDxRx Software User Manual

How to generate differential diagnoses

1. Visit www.DDxRx.com and enter your user-id and password in login page
2. Enter at least 2 or 3 signs, symptoms or clinical findings in search boxes
3. Use the review of system section at the bottom of the search tab to enter signs and symptoms
4. You may enter signs symptoms by typing first 2-4 letters, once you master the process. In such case, instead of writing in full, select appropriate signs, symptoms, and laboratory findings from drop down box
5. Click search after entering signs and symptoms
6. Focus on high probability differential diagnoses shown in new page

Patient with acute symptoms (urgent care visits):

1. Ask the patient why did he or she came today?
2. Find appropriate system from the review of system at the bottom of the search tab.
3. Select the symptoms and ask the question as it appear when you mouse put your curser over it.
4. Then ask the whether any other symptoms he or she has?
5. Follow the same like the first symptom.
6. Then ask next question underneath the first and second symptom and finish all the question until you get third symptom.
7. Then click on "Search".

Patient with follow up visit or routine visit or annul wellness visit (primary care visits):

1. Enter "Follow up visit" in search boxes
2. If it's annual wellness visit – select "age range" for age specific screening recommendations
3. Click on "search"
4. Under the high probability differential diagnoses, find an empty box "add differential diagnoses".
5. Ask whether patient has any know diagnoses? If hypertension present, add "Hypertension Follow up" or type any diagnoses patient have e.g. "Congestive heart failure follow up". Or you can add "Congestive heart failure follow up" or "Diabetes follow up" in search box and then search.

Fig 1: Brief work flow

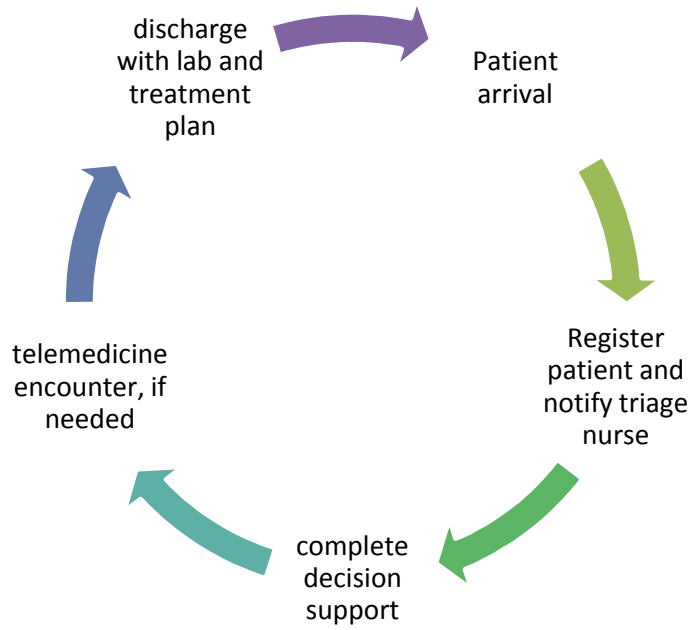


Fig 2: Patient care process flow chart

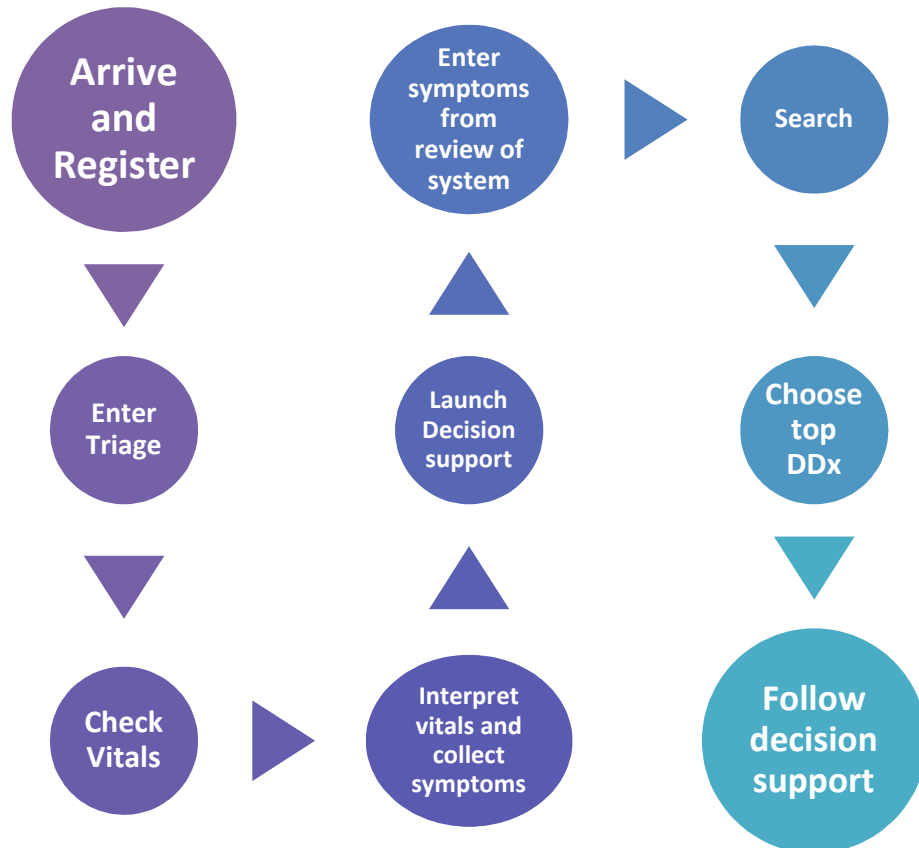


Fig 3: Decision support flow chart

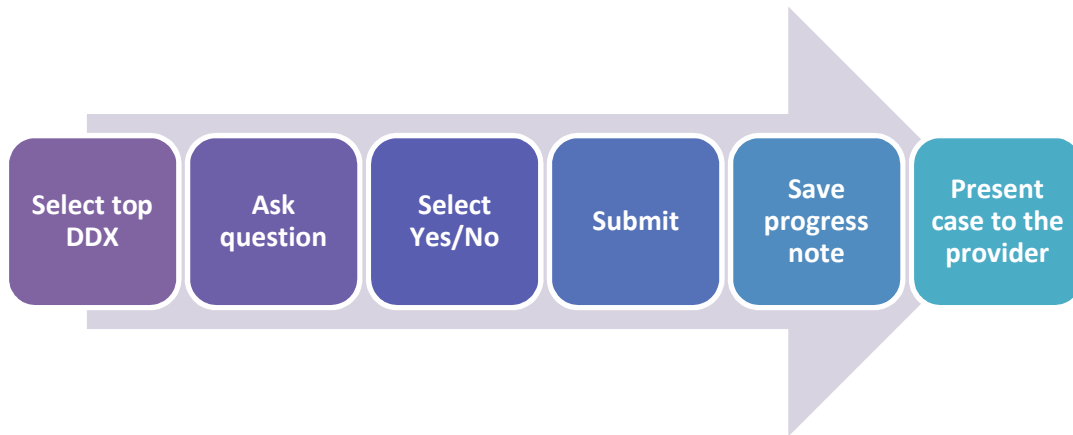


Fig 4: The decision support instruction and progress note

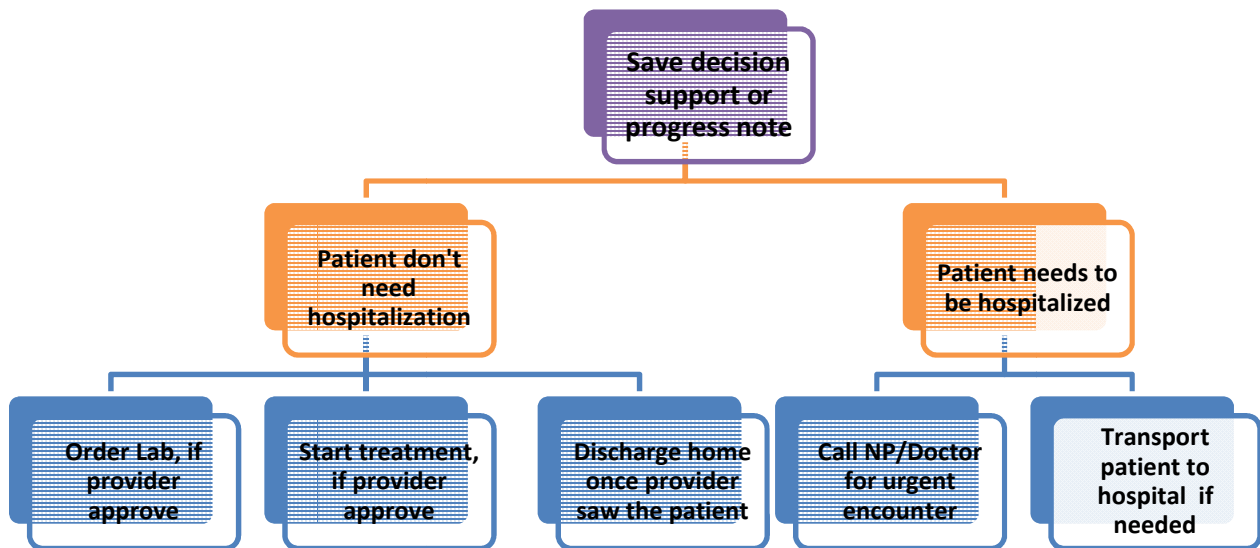


Fig 5: Remote site telemedicine encounter process

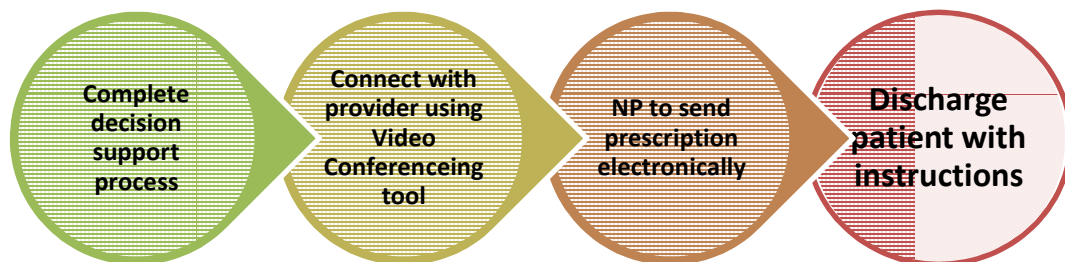


Fig 6: High probability differential diagnoses not found

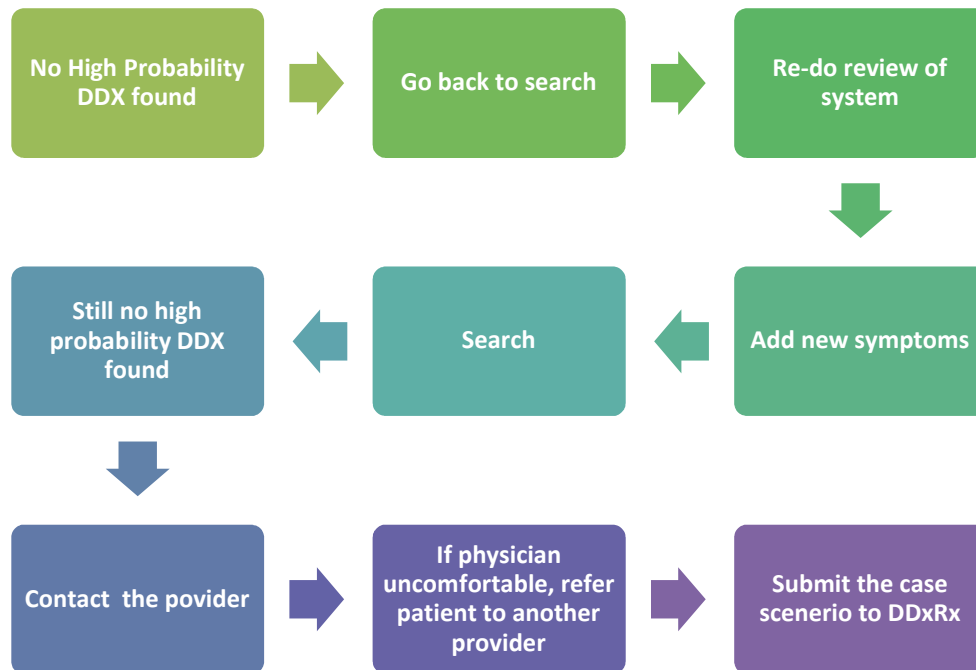


Fig 7: Decision support link not found

